

POTISSIMUM® INDUSTRY

Thanks to its special manufacturing process, POTISSIMUM® industrial electro-welded steel grating system offers exceptional sturdiness combined with a great versatility. With its wide range of ready from stock mesh sizes, it can respond to every need and situation, mainly for industrial applications. Tailored, framed and shaped grating panels are realized to complete from the simplest, to the more complex project with the support of our unique in-house technical office, assisting the customers at the design stage to provide the most economic and appropriate solutions.

Both the standard semi-finished grating mats called GEA, sized 6100x1000mm and the cut-to-size panels are supplied CE marked and with the relevant Italian Protected Designation of Origin (PDO).

TECHNICAL DETAILS

Material

> S235 JR UNI EN 10025 Steel

Coating

> Hot-dip galvanizing according to UNI EN ISO 1461

Painting

> RAL colours

Accessories

> Fixing clips > see page 68

APPLICATIONS

- > Walkways
- > Stair treads
- > Drain covers
- > Industrial floors
- > Mezzanines

PRODUCT SPECIFICATIONS

ORSOGRIL POTISSIMUM® industrial electro-welded grating - GES Cut-to-size framed panels (bearing bar - mesh)

Mesh mm: 30/34 x ...

Bearing flat bar mm: ...

Twisted square cross bar mm:

Edges framing flat bar, mm with continuous groove, forge-welded to the grating (on regular squared panels)

Weight kg/m²: ...

Material: S235JR UNI EN 10025 Steel

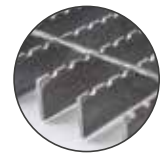
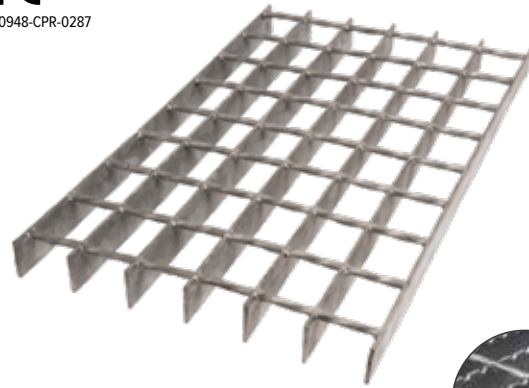
Finish: hot-dip galvanizing, according to UNI EN ISO 1461

AGLAIA fixing clip for mm mesh - bottom or top fixing

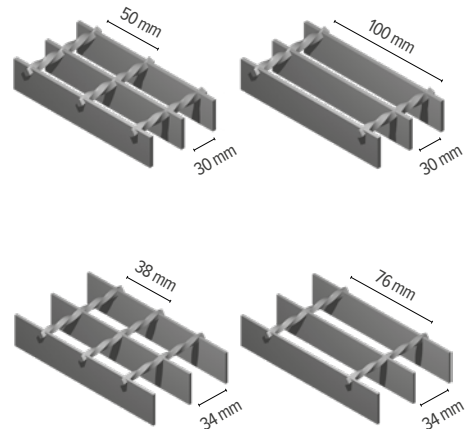
CE certified (Ref. Factory Manufacturing Control Certificate 0948-CPR-0287)



NR 0948-CPR-0287



Detail for serrated version (anti-skid Class R10 no. 5648/14)



BEARING BAR		CROSS BAR DIRECTION	No bearing bars	34*	34*	30*	30*
H	S	L		Mesh	35x50	30x100	34x38
mm	mm	mm	Weight	kg/m ²	kg/m ²	kg/m ²	kg/m ²
25	2	998		-	-	14,0	12,4
30	2	998		-	-	16,2	14,6
40	2	998		-	-	20,7	-
25	3	999		21*	19,8*	19,6	18
30	3	999		24,9*	23,7*	23,1*	21,4
40	3	999		32,6	31,4	29,9*	28,3
50	3	999		-	-	36,7	35,1
40	4	1000		43	41,8	39,1	37,4
25	5	1000		34,4*	32,4*	-	-
30	5	1000		40,9*	38,9*	-	-
32	5	1000		43,5*	41,5*	-	-

GEA MAT SIZE 6100X1000 mm, (UNFRAMED – SELF COLOURED)

*cross bars twisted

*offered also with serrated bearing bar

Weights (kg/m²) are theoretical and subject to dimensional tolerances of raw materials (page 16 of UNI 11002, Point 5.3, Prospect 1)

