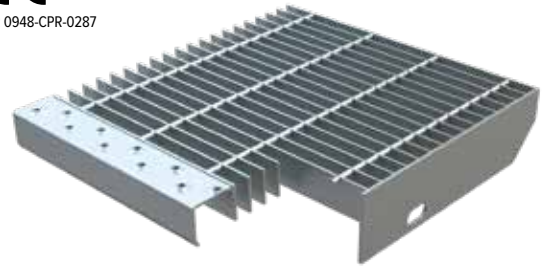


STANDARD GRATING STAIR TREADS®

For outdoor and emergency stairs are mainly used STANDARD GRATING STAIR TREADS due to their compliance with loading requirements and to the empty-to-full ratio ensuring fire smokes rapid evacuation. All NUOVA DEFIM ORSOGRIL grating stair treads are supplied CE marked and with the relevant Italian Protected Designation of Origin (PDO).



TECHNICAL DETAILS

Material

> S235JR UNI EN 10025 Steel

Coating

> Hot-dip galvanizing according to UNI EN ISO 1461

APPLICATIONS

- > Emergency security stairs
- > Service stairs

PRODUCT SPECIFICATIONS

Welded ORSOGRIL GRATING STAIR TREADS

to be bolted - STD

Mesh mm: ...

Bearing flat bar mm: ...

Round cross wire mm: ...

Dimensions mm: ...

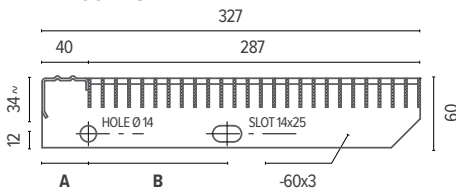
Grating panel provided with a special front profile called "nosing" and two perforated side plates for bolting it to the steel stair supports.

Weight kg/each: ...

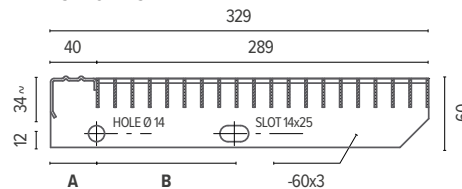
Material: S235JR UNI EN 10025 Steel

Finish: hot-dip galvanizing according to UNI EN ISO 1461

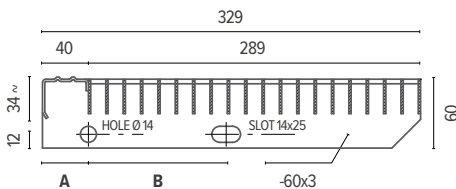
11x100 - 25x2



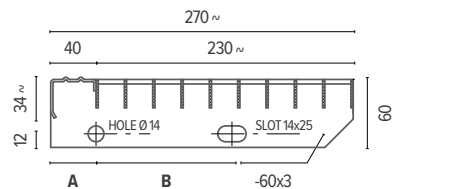
15x76 - 25x2



15x76 - 30x2



25x76 - 25x2



| DESCRIPTION | MESH | | BEARING BAR | | DIMENSIONS | | | DRILLING UNI NORMS | |
|--|------|----|-------------|----|------------|-----|--------|--------------------|-----|
| | H | L | H | S | H | L | Weight | A | B |
| | mm | mm | mm | mm | mm | mm | kg/ea | mm | mm |
| Slip-resistance nosing with profiled upwards facing holes | 15 | 76 | 25 | 2 | 1000 | 329 | 11,0 | 40 | 120 |
| Slip-resistance nosing with profiled upwards facing holes | 15 | 76 | 25 | 2 | 1200 | 329 | 13,1 | 40 | 120 |
| Slip-resistance nosing with profiled upwards facing holes ** | 15 | 76 | 30 | 2 | 1200 | 329 | 15,1 | 40 | 120 |
| Slip-resistance nosing with profiled upwards facing holes | 25 | 76 | 25 | 2 | 600 | 267 | 4,3 | 40 | 120 |
| Slip-resistance nosing with profiled upwards facing holes | 25 | 76 | 25 | 2 | 700 | 267 | 4,9 | 40 | 120 |
| Slip-resistance nosing with profiled upwards facing holes | 25 | 76 | 25 | 2 | 800 | 267 | 5,5 | 40 | 120 |
| Slip-resistance nosing with profiled upwards facing holes | 25 | 76 | 25 | 2 | 900 | 267 | 6,1 | 40 | 120 |
| Slip-resistance nosing with profiled upwards facing holes | 25 | 76 | 25 | 2 | 1000 | 267 | 6,7 | 40 | 120 |



*EXODUS® STEPS FOR SECURITY STAIRS (HEEL PROOF MESH – TYPE TO BE BOLTED)

* According to the D.M. 236, dated 14 June 1989

** According to the UNI 1100-2 norm, test reported from Milan Polytechnic (P.54/2 – 8.11.2)