

Accessories



Download



ACCESSORIES

[http://www.nuovadefim.com/it/content/
download-area](http://www.nuovadefim.com/it/content/download-area)

POSTS_ P. 60

ASSEMBLY SYSTEMS_ P. 62

FIXING SYSTEMS
ACCESSORIES
SCREWS

FENCING ACCESSORIES_ P. 63

CAPS_ P. 65

**RECINTHA®
ACCESSORIES_** P. 66

**DEFENDER
ACCESSORIES_** P. 67

**GRATING
ACCESSORIES_** P. 68

ALARM SYSTEMS_ P. 69



POSTS

Via Cavolto, 10
22040 Anzano del Parco (Co)
Tel. +39 031 33521
Fax +39 031 3352138

P.Iva 03046230987



info@nuovadefim.com
www.nuovadefim.com



SQUARE POST 60X60 mm

- > Square post 60x60 mm thickness 1,2 mm
- > Hot-dip galvanized and polyester powder coated finish
- > Available models: with base plate or for concrete anchoring
- > Base plate size: 150x80x4 mm with four Ø 12 mm holes

Accessory for

- > RECINTHA® N/L [PAGE 28]
- > RECINTHA® N/L YOUNG [PAGE 29]
- > RECINTHA® 202 [PAGE 30]
- > RECINTHA® P.G. [PAGE 31]

Product code

RCPN0060XXXX



ANTICLEA POST Ø 50 mm

- > Ø 50 mm round post, thickness 2 mm
- > Material: hot-dip galvanized steel according to UNI EN ISO 1461, polyester powder coated finish also available
- > Available models: with base plate, or for concrete anchoring
- > Base plate size: 130x60x7 mm with two Ø 12 mm holes
- > Slot provided for fixing straight fence sections or corners

Accessory for

- > ANTICLEA® [PAGE 39]

Product code

PIA50XXXX



ROUND POST Ø 40 mm

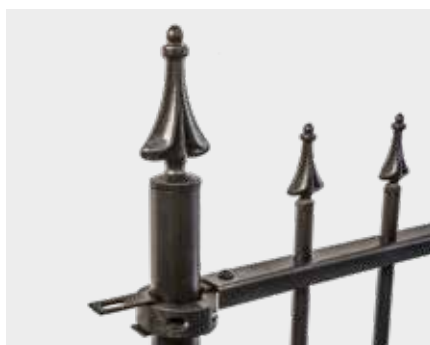
- > Ø 40 mm round post, thickness 1,2 mm
- > Hot-dip galvanized and polyester powder coated finish
- > Available models: with base plate, or for concrete anchoring
- > Base plate size: 150x80x4 mm with four Ø 12 mm holes

Accessory for

- > RECINTHA® N/L [page 28]
- > RECINTHA® N/L YOUNG [page 29]
- > RECINTHA® P.G. [page 31]

Product code

RCPC0040XXXX



ROUND POST Ø 40 mm "GIGLIO" STYLE

- > Ø 40 mm round post, thickness 1,2 mm, zinc alloy top decorations
- > Hot-dip galvanized and micaceous grey polyester powder coated finish
- > Available models: with base plate, or for concrete anchoring
- > Base plate size: 150x80x4 mm with four Ø 12 mm holes

Accessory for

- > RECINTHA® GIGLIO [page 40]

Product code

RGPN0000XXXX



RECTANGULAR POST 60x120 mm

- > 60x120 mm rectangular post thickness 2 mm
- > Hot-dip galvanized and polyester powder coated finish
- > Available models: for concrete anchoring
- > With either threaded inserts to suit mesh clips, or with cover plate and securitybolt.

Accessory for

- > RECINTHA® SAFETY [page 32]

Product code

RGPNSPECIALEXXX



OMEGA POST & FLAT COVER PLATE 60x40x25x3 mm

- > 60x40x25 mm Omega post with 90x4 mm cover plate
- > Predrilled for security bolt installation
- > Hot-dip galvanized and polyester powder coated finish
- > Available models: for concrete anchoring

Accessory for

- > RECINTHA® 202 [page 30]
- > RECINTHA® SAFETY [page 32]

Product code

RCOM3060XXXX

Piatto: RCPT4090XXXX



POSTS

Via Cavolto, 10
22040 Anzano del Parco (Co)
Tel. +39 031 33521
Fax +39 031 3352138

P.Iva 03046230987



info@nuovadefim.com
www.nuovadefim.com



OMEGA POST & FLAT COVER PLATE 120x60x30x3 mm

- > 120x60x30x3 mm Omega post with 120x4 mm cover plate
- > Predrilled for security bolt installation
- > Hot-dip galvanized and polyester powder coated finish
- > Available models: for concrete anchoring

Accessory for

- > RECINTHA® 202 [page 30]
- > RECINTHA® SAFETY [page 32]
- > RECINTHA® STADIUM [page 33]

Product code

RCOM3120XXXX
Flat plate: RCPT40120XXXX



FLAT BAR POST 80x8 mm

- > 80x8 mm flat bar post for grating panels over 2 meters height
- > Material: hot-dip galvanized steel according to UNI EN ISO 1461; polyester powder coated finish also available
- > Available models: with base plate or for concrete anchoring
- > Base plate size 150x80x8 mm with four Ø 12 mm holes
- > Provided with 3 fixing holes, one of which is for intermediate fixing > see page 62

Accessory for

- > STEROPE® [page 41]
- > PLEIONE® [page 42]
- > BRITOSTEROPE® [page 43]

Product code

PIA808XXXX



FLAT BAR POST 60x7 mm

- > 60x7 mm flat bar post for grating panels up to 2 meters height
- > Material: hot-dip galvanized steel according to UNI EN ISO 1461; polyester powder coated finish also available
- > Available models: with base plate or for concrete anchoring
- > Base plate size 130x60x7 mm with two Ø 12 mm holes
- > Provided with 2 fixing holes; for H 1986 mm panels, post is equipped with an extra central hole for intermediate fixing > see page 62

Accessory for

- > STEROPE® [page 41]
- > PLEIONE® [page 42]
- > BRITOSTEROPE® [page 43]
- > ACUMINA® [page 37]
- > CELENO® [page 38]

Product code

PIA607XXXX



WELDED "C" SECTION POST 80x40x23x12 mm

- > 80x40x23x12 mm C section post thickness 2 mm, directly welded to Elettra panel
- > Material: hot-dip galvanized steel according to UNI EN ISO 1461; polyester powder coated finish also available
- > Available models: with base plate or for concrete anchoring
- > Base plate size 180x100x10 mm with two Ø 12 mm holes
- > Provided with a top hole for fixing each panel to the next one

Accessory for

- > ELETTRA [page 44]



IPE100 POST

- > IPE 100 mm post
- > Material: hot-dip galvanized steel according to UNI EN ISO 1461; polyester powder coated finish also available
- > Available model for concrete anchoring

Accessory for

- > STADION® [page 45]

Product code

PIA11XXXX



CUSTOM MADE POSTS FOR SPECIFIC PROJECTS

- > Post with different profile can also be provided for specific requirements

Accessory for

- > all fencing system [with the exception of DEFENDER]

Product code

For grating fences: PIASPEC....
For mesh fences: RCPNSPEC....



ASSEMBLY SYSTEMS

Via Cavolto, 10
22040 Anzano del Parco (Co)
Tel. +39 031 33521
Fax +39 031 3352138

P.Iva 03046230987



info@nuovadefim.com
www.nuovadefim.com



FIXING SYSTEMS

MP UNIVERSAL CLIP 60x60 mm SQUARE POST

- > MP (Multi-Purpose) universal joint clip in black reinforced plastic
- > It offers different types of fixing solutions, using either the sides or the central notches (check the post centres distance on the technical table)
- > Specifically designed shape to facilitate stepped and/or all degrees corner installation
- > NUOVA DEFIM SpA patent registered

Accessory for

- > RECINTHA® N/L [page 28]
- > RECINTHA® N/L YOUNG [page 29]
- > RECINTHA® 202 [page 30]
- > RECINTHA® P.G. [page 31]

Product code

49001023INOX



FIXING SYSTEMS

CRAB-TYPE CLIP Ø 40 mm ROUND POST

- > Crab-type clip in black reinforced plastic
- > It offers different types of fixing solutions, using either the sides or the central notches (check the post centres distance on the technical table)
- > Specifically designed shape to facilitate stepped and/or all degrees corner installation

Accessory for

- > RECINTHA® N/L [page 28]
- > RECINTHA® N/L YOUNG [page 29]
- > RECINTHA® P.G. [page 31]
- > RECINTHA® GIGLIO [page 40]

Product code

GRANCHIOXXX



FIXING SYSTEMS

HIDDEN PIN

- > Fully hidden fixing system
- > Although invisible one installed, it guarantees security

Accessory for

- > ANTICLEA® [page 39]

Product code

SPINETTANTICZ



FIXING SYSTEMS

MESH CLIP

- > Predrilled fixing clip
- > Easy to install, it guarantees a high level of security
- > Available both in hot-dip galvanized and polyester powder coated finish

Accessory for

- > RECINTHA® SAFETY [page 32]

Product code

MESHCLIPX...



ACCESSORIES

INTERMEDIATE BRACKET

- > Optional fixing bracket for grating systems only when exceeding H 1986 mm (always provided for the specified sizes)
- > The special "fork" shape improves the rigidity of the panel
- > Material: electro-galvanized finish

Accessory for

- > STEROPE® [page 41]
- > PLEIONE® [page 42]
- > BRITOSTEROPE® [page 43]

Product code

ATTINXXXX...



ACCESSORIES

STRAIGHT BRACKET

- > Bracket to joint on site cut to size grating fence panel to post
- > Material: electro-galvanized finish
- > Polyester powder coated finish also available

Accessory for

- > STEROPE® [page 41]
- > PLEIONE® [page 42]
- > BRITOSTEROPE® [page 43]

Product code

SQUTELX....

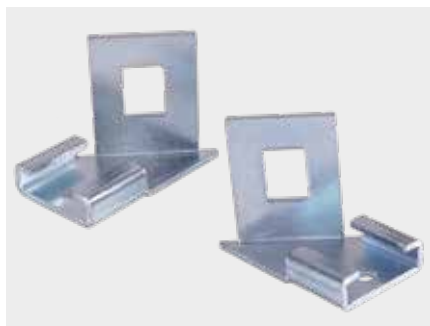


ASSEMBLY SYSTEMS

Via Cavoalto, 10
22040 Anzano del Parco (Co)
Tel. +39 031 33521
Fax +39 031 3352138
P.Iva 03046230987



info@nuovadefim.com
www.nuovadefim.com



ACCESSORIES

45° BRACKET

- > Bracket to joint on site cut to size grating fence corner panels to post
- > Material: electro-galvanized finish
- > Polyester powder coated finish also available

Accessory for

- > STEROPE® [page 41]
- > PLEIONE® [page 42]
- > BRITOSTEROPE® [page 43]

Product code

Right: SQUTEL45DXXXX
Left: SQUTEL45SXXXX

FENCING ACCESSORIES



FIXING SYSTEMS

ANTI-INTRUSION SPIKES

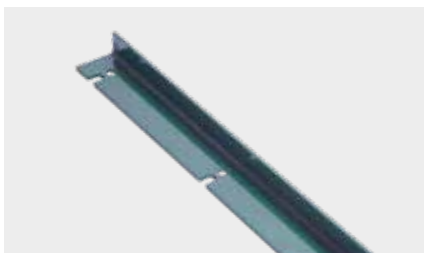
- > Optional anti-intrusion accessory to fix to the grating fence system top
- > Length 1992 mm - H 55 mm approximately
- > Hot-dip galvanized finish according to UNI EN ISO 1461 norm
- > Polyester powder coated finish also available

Accessory for

- > STEROPE® [page 41]
- > PLEIONE® [page 42]
- > BRITOSTEROPE® [page 43]
- > ELETTRA [page 44]

Product code

Hot-dip galvanized: KITANTINTRUSZ
Paint coated: KITANTINTRUSV



ACCESSORIES

INCLINED EXTENSION FOR ALL SQUARE, RECTANGULAR AND OMEGA POSTS IN L SECTION 50x30x4 mm

- > Fencing accessory to install barbed wire
- > Provided with 3 holes to fix barbed wire
- > Single or double version available on demand
- > Material: Hot-dip galvanized
- > Polyester powder coated finish also available
- > Suitable for posts: 60x60 mm square tube, 60x7 mm and 80x8 mm flat bar, 60x40 mm and 120x60 mm Omega sections

Accessory for

- > RECINTHA® N/L [page 28]
- > RECINTHA® N/L YOUNG [page 29]
- > RECINTHA® 202 [page 30]
- > RECINTHA® SAFETY [page 32]

Product code

RCPNOFFENDXXX



ASSEMBLY SYSTEMS

Via Cavolto, 10
22040 Anzano del Parco (Co)
Tel. +39 031 33521
Fax +39 031 3352138
P.Iva 03046230987



info@nuovadefim.com
www.nuovadefim.com

SCREW BOLTS



M6X20 TTQST SS SCREW M6 SS SECURITY BOLT

Accessory for
> RECINTHA® STADIUM [page 33]
Product code
BULANT0620INOX



M6X20 HEXAGON HEAD SCREW M6 SS HEXAGON BOLT

Accessory for
> ELETTRA [page 44]
Product code
BUL0620INOX



M6X35 TTQST SS SCREW M6 SS SECURITY BOLT

Accessory for
> RECINTHA® SAFETY [page 32]
> RECINTHA® STADIUM [page 33]
Product code
BULANT0635INOX



M8X20 TTQST SS SCREW M8 SS SECURITY BOLT

Accessory for
> RECINTHA® STADIUM [page 33]
Product code
BULANT0820INOX



8X20 TBEI NERINOX SCREW M8 SS KNURLED FLANGED BOLT

Accessory for
> RECINTHA® GIGLIO [page 40]
Product code
NOT SOLD SEPARATELY



M8X35 TTQST SS SCREW M8 SS SECURITY BOLT

Accessory for
> RECINTHA® SAFETY [page 32]
Product code
BULANT0835INOX

1

M8X60 TTQST SS SCREW M8 SS SECURITY BOLT

Accessory for
> RECINTHA® SAFETY [page 32]
Product code
BULANT0860INOX

2

M8X80 TTQST SS SCREW M8 SS SECURITY BOLT

Accessory for
> RECINTHA® SAFETY [page 32]
> RECINTHA® STADIUM [page 33]
Product code
BULANT0880INOX



3

M10X30 TTQST SS SCREW M10 SS SECURITY BOLT

Accessory for
> ACUMINA® [page 37]
> CELENO® [page 38]
> STEROPE® [page 41]
> PLEIONE® [page 42]
> BRITOSTEROPE® [page 43]
> STADION® [page 45]
> TALIA® VENTUS [page 46]
> TALIA® VENTUS SCREEN [page 47]
> TALIALIVE [page 48]
Product code
BULANT1030INOX

4

M10X30 HEXAGON HEAD SCREW M10 SS HEXAGON BOLT

Accessory for
> ACUMINA® [page 37]
> CELENO® [page 38]
> STEROPE® [page 41]
> PLEIONE® [page 42]
> BRITOSTEROPE® [page 43]
> STADION® [page 45]
> TALIA® VENTUS [page 46]
> TALIA® VENTUS SCREEN [page 47]
> TALIALIVE [page 48]
Product code
BUL1030INOX





SQUARE CAP 60x60 mm

- > The cap fully seals off the post, preventing the entry of water
- > Material: Moplen®

Accessory for

- > RECINTHA® N/L [pag. 28]
- > RECINTHA® N/L YOUNG [pag. 29]
- > RECINTHA® 202 [pag. 30]

Product code

RCAC00000006



ROUND CAP Ø 50 mm

- > The cap fully seals off the post, preventing the entry of water
- > Material: Moplen®

Accessory for

- > ANTICLEA® [page 39]

Product code

TAPPIATUBO50



ROUND CAP Ø 40 mm

- > The cap fully seals off the post, preventing the entry of water
- > Material: Moplen®

Accessory for

- > RECINTHA® N/L [page 28]
- > RECINTHA® N/L YOUNG [page 29]
- > RECINTHA® P.G. [page 31]

Product code

RCAC00000026



RECTANGULAR CAP 120x60 mm

- > The cap fully seals off the post, preventing the entry of water
- > Material: Moplen®

Accessory for

- > RECINTHA® SAFETY [page 32]

Product code

RCAC00000007



OMEGA POST CAP 120x60 mm

- > Omega post cap in pre-galvanized and painted steel

Accessory for

- > RECINTHA® 202 [page 30]
- > RECINTHA® SAFETY [page 32]

Product code

LAMCHIUSXXX

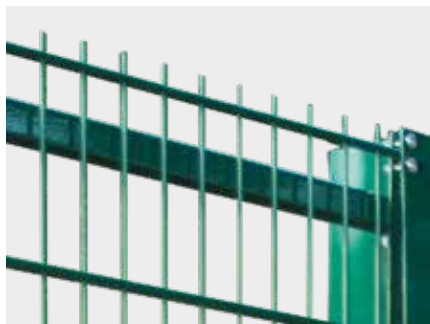


RECINTHA® ACCESSORIES

Via Cavolto, 10
22040 Anzano del Parco (Co)
Tel. +39 031 33521
Fax +39 031 3352138
P.lva 03046230987



info@nuovadefim.com
www.nuovadefim.com



"U" SECTION PROFILE 35x40x5 mm

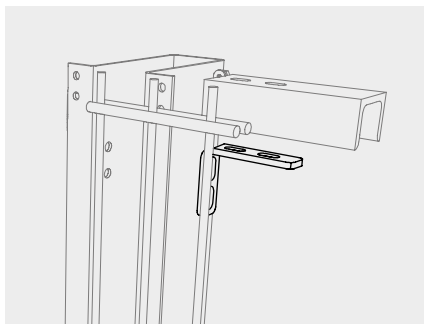
- > "U" section profile used on RECINTHA® STADIUM upper part to strengthen the system
- > Material: hot-dip galvanized and polyeste powder coated finish

Accessory for

- > RECINTHA® STADIUM [page 33]

Product code

RCCU4035XXXX



POST/PROFILE FIXING BRACKET

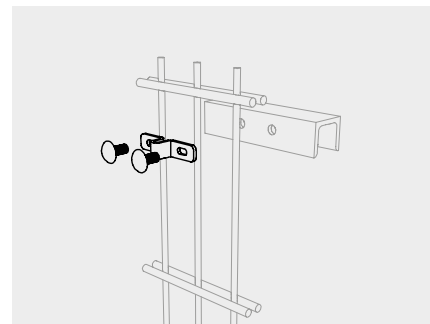
- > RECINTHA® STADIUM accessory
- > Using for fixing the U section profile to the Omega post
- > Material: hot-dip galvanized and polyester powder coated finish

Accessory for

- > RECINTHA® STADIUM [page 33]

Product code

RCSQ520014X



POST/PANEL FIXING CLIPS

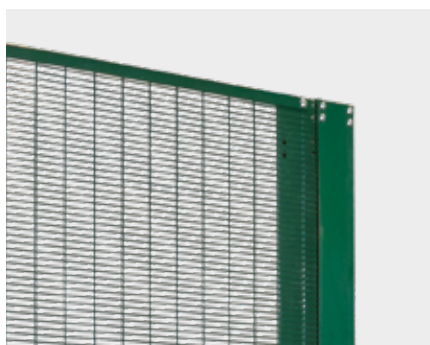
- > RECINTHA® STADIUM accessory
- > Using for fixing the panel to the U section profile
- > Material: hot-dip galvanized and polyester powder coated finish

Accessory for

- > RECINTHA® STADIUM [page 33]

Product code

RCSQ03150097X



RAILING BARS (TOP AND BOTTOM)

- > RECINTHA® SAFETY "U" section profile optional accessories
- > Makes RECINTHA SAFETY installation easier and improves its straightness
- > Can be installed either at panel top or bottom and at both
- > Screwed to the mesh
- > Material: hot-dip galvanized and polyester powder coated finish
- > 30x16x30 mm U-shaped profile predrilled to fix it to the panel

Accessory for

- > RECINTHA® SAFETY [page 32]

Product code

RCCM303016V



HANDRAIL

- > To hide panel spikes, making RECINTHA N/L short sizes suitable in playgrounds
- > Length 2000 mm or 2500 mm
- > Tube Ø 40 mm, thickness 1,2 mm
- > Produced with a cut in the length to slide it in the panel top
- > Material: hot-dip galvanized and polyester powder coated finish

Accessory for

- > RECINTHA® P.G. [page 31]

Product code

RCCM00402000...



HANDRAIL JOINT/CORNER CONNECTION

- > RECINTHA PG accessory providing continuity in curved or straight handrail section
- > Material Moplen®

Accessory for

- > RECINTHA® P.G. [page 31]

Product code

Handrail joint:

RCAC00000003

Handrail corner connection:

RCAC00000025



DEFENDER ACCESSORIES

Via Cavolto, 10
22040 Anzano del Parco (Co)
Tel. +39 031 33521
Fax +39 031 3352138

P.Iva 03046230987



info@nuovadefim.com
www.nuovadefim.com



GATE KIT

- > Accessory for DEFENDER HD PLUS pedestrian and vehicular gates
- > Used to join the gate to the DEFENDER HD PLUS, acting as a "hinge"
- > Material: hot-dip galvanized and high-visibility (RAL 2004)

Accessory for

- > DEFENDER HD PLUS [page 34]
- > DEFENDER CITY [page 36]

Product code

DFKTB00000010



PEDESTRIAN GATE

- > Accessory for DEFENDER HD PLUS system
- > Gives access to pedestrians in area where temporary fencing system is used
- > Width 1000 mm - H 2000 mm total
- > Made of shaped 40 mm tubular profile with electro-welded mesh paneling
- > Material: hot-dip galvanized

Accessory for

- > DEFENDER HD PLUS [page 34]
- > DEFENDER CITY [page 36]

Product code

DFCHBS20001000



VEHICULAR GATE

- > Accessory for Defender HD PLUS system
- > Gives access to vehicles in area where temporary fencing system is used
- > Overall width 2200 mm - H 2000 mm total
- > Made of shaped 40 mm tubular profile with electro-welded mesh paneling
- > Material: hot-dip galvanized

Accessory for

- > DEFENDER HD PLUS [page 34]
- > DEFENDER CITY [page 36]

Product code

DFCHBS20002200



SECURITY JOINTS

- > Optional accessory used to join two adjacent panels for enhanced perimeter security
- > Made of high visibility reinforced plastic (RAL 2004)

Accessory for

- > DEFENDER HD PLUS [page 34]
- > DEFENDER MARATHON® [page 35]
- > DEFENDER CITY® [page 36]

Product code

DFAC0000001



WIND BRACE

- > Optional accessory for DEFENDER HD PLUS system enhanced resistance to wind push
- > Length 1550 mm
- > Material: pre-galvanized tube

Accessory for

- > DEFENDER HD PLUS [page 34]
- > DEFENDER CITY® [page 36]

Product code

DFST00001700



CONCRETE BLOCKS

- > Base for DEFENDER HD PLUS system installation provided with four Ø 42 mm holes
- > Dimensions 700x190 mm H 130 mm
- > Approximate weight 30 Kg
- > Material: cement with steel armour

Accessory for

- > DEFENDER HD PLUS [page 34]
- > DEFENDER MARATHON® [page 35]
- > DEFENDER CITY® [page 36]

Product code

Holes Ø 38 mm: DFBS00000001C
Holes Ø 40 mm: DFBS00000002C



DEFENDER ACCESSORIES

Via Cavolto, 10
22040 Anzano del Parco (Co)
Tel. +39 031 33521
Fax +39 031 3352138
P.Iva 03046230987



info@nuovadefim.com
www.nuovadefim.com



ABS PLASTIC BLOCKS

- > Base for DEFENDER HD PLUS system installation provided with six Ø 42 mm holes
- > Dimensions 660x240 mm H 100 mm
- > Approximate weight 30 Kg
- > Material: high-visibility plastic coated concrete (RAL 2004)

Accessory for

- > DEFENDER HD PLUS [page 34]
- > DEFENDER MARATHON® [page 35]
- > DEFENDER CITY® [page 36]

Product code

Holes Ø 38 mm: DFBS00000001P
Holes Ø 40 mm: DFBS00000002P



WHEEL KIT

- > Accessory to be added to the pedestrian and vehicular gates of the DEFENDER HD Plus system. It make easy the opening of the pedestrian and vehicular gate facilitating the sliding on the surface.
- > Material Moplan®

Accessory for

- > DEFENDER HD PLUS [page 34]
- > DEFENDER CITY® [page 36]

Product code

DFACBS000000005



GRATING ACCESSORIES



AGLAIA TOP FASTENING CLIP

- > Accessory used for fixing horizontal grating panels to the steel structure making the safer
- > Used for top fixing
- > Available for mesh sizes 11-15 mm, 22-25 mm, 30-34 mm, each one for either 25-40 mm or 50-80 mm bearing flat bars, respectively
- > Material: hot-dip galvanized according to UNI EN ISO 1461 norm

Accessory for

- > all gratings

Product code

Top fixing: GAN#XXXXXSOPZ



AGLAIA BOTTOM FASTENING CLIP

- > Accessory used for fixing horizontal grating panels to the steel structure making the safer
- > Used for bottom fixing
- > Available for mesh sizes 11-15 mm, 22-25 mm, 30-34 mm, each one for either 25-40 mm or 50-80 mm bearing flat bars, respectively
- > Material: hot-dip galvanized according to UNI EN ISO 1461 norm

Accessory for

- > all gratings

Product code

Top fixing: GAN#XXXXXSOTZ



CONNECTIONS CLIPS

- > Accessory for connecting adjacent horizontal grating panels. Available for mesh size 11-15 mm for bottom fixing only and for mesh sizes 22-25 mm, 30-34 mm for both top and bottom fixing

Accessory for

- > all gratings

Product code

Top fixing:
Bottom fixing:

GANCO#XXXXXSOPZ
GANCO#XXXXXSOTZ



ALARM SYSTEMS

Via Cavoalto, 10
22040 Anzano del Parco (Co)
Tel. +39 031 33521
Fax +39 031 3352138

P.Iva 03046230987



info@nuovadefim.com
www.nuovadefim.com



MACS SENSORS

- > MEMS sensor chain with single screw fixing system

Accessory for

- > RECINTA N/L [page 28]
- > RECINTA N/L YOUNG [page 29]
- > RECINTA 202 [page 30]
- > RECINTA SAFETY [page 32]
- > STEROPE [page 41]
- > PLEIONE [page 42]
- > BRETOSTEROPE [page 43]
- > ELETTRA [page 44]
- > TALIA VENTUS [page 46]
- > TALIA VENTUS SCREEN [page 47]
- > TALIALIVE [page 48]